

See discussions, stats, and author profiles for this publication at: <https://www.researchgate.net/publication/330544901>

# The Lithobiomorpha of the continental Iberian Peninsula (Chilopoda): new data, description of a new species of the genus *Lithobius* (s. str.), checklist and identification key

Article · January 2019

CITATIONS

5

READS

1,072

2 authors:



**Etienne Iorio**

El - Entomologie & Myriapodologie

119 PUBLICATIONS 589 CITATIONS

[SEE PROFILE](#)



**Karin Voigtländer**

Senckenberg Research Institute

160 PUBLICATIONS 875 CITATIONS

[SEE PROFILE](#)

Some of the authors of this publication are also working on these related projects:



Dragonflies (Odonata) of Western and Southern France [View project](#)



ground beetles of Brandenburg [View project](#)

**The Lithobiomorpha of the continental Iberian Peninsula (Chilopoda)**

New data, description of a new species of the genus *Lithobius* (s. str.), checklist and identification key

by **Étienne IORIO & Karin VOIGTLÄNDER**

The authors are experienced myriapodologists who make numerous researchs on Chilopoda of Western Europe. Here they propose a well attractive monograph on one of the main orders of centipedes in continental Iberian Peninsula: the Lithobiomorpha. This monograph fills a wide gap since previous publications on the identification of this group in this area were several decades old.

The book gives many new data on distribution, on morphology and on taxonomy of Spanish Lithobiomorpha. It also includes identification keys which allow to identify all the Iberian species, without the insular species. These keys are illustrated by hundred figures (magnified color pictures made under trinocular lens), which facilitate their interpretation.

Before the identification keys, the morphology of Lithobiomorpha is explained to be more accessible for the beginner in this group. A checklist of the Lithobiomorpha of the continental Iberian Peninsula is included, with the presence/absence in each country (Spain and Portugal) after the present knowledge. Endemic and subendemic species are also underlined.

**Bruno Cahuzac**

2019

N° ISSN 1272-6184

**The Lithobiomorpha of the continental Iberian Peninsula (Chilopoda): new data, description of a new species of the genus *Lithobius* (s. str.), checklist and identification key**



Étienne IORIO & Karin VOIGTLÄNDER

MÉMOIRES de la SOCIÉTÉ LINNÉENNE de BORDEAUX

Tome 18 – 2019

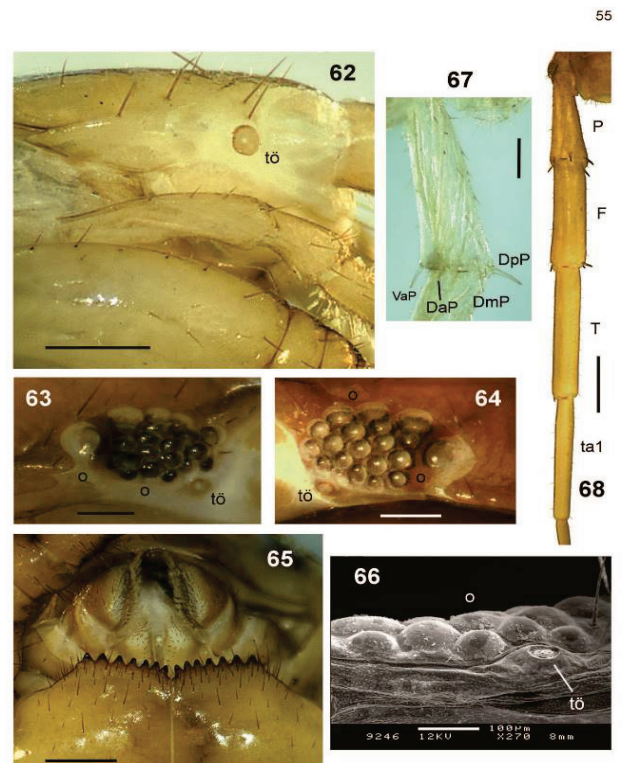


Fig. 62: *Lithobius (Lithobius) typhlus*, head, lateral view (ts = Tömösvary's organ); scale bar = 0.3 mm (picture by EI). Figs 63-68: *L. (L.) validus* (pictures by EI). Figs 63-64: anterior part of the head of two specimens, one Spanish and one French, lateral view (o = ocelli; to = Tömösvary's organ); scale bar = 0.2 mm. Fig. 65: coxosternite, ventral view showing the forcipular teeth; scale bar = 0.5 mm. Fig. 66: ocelli (= o) and Tömösvary's organ (= to) with SEM (picture: MF). Fig. 67: left 15<sup>th</sup> prefemur of an *agenitalis* stadium, dorsal view, scale bar = 0.2 mm. Fig. 68: left L-15, dorsal view (P = prefemur; F = femur; T = tibia; ta1 = tarsus 1); scale bar = 1 mm.

**Order to:** SOCIÉTÉ LINNÉENNE DE BORDEAUX, 1 place Bardineau, 33000 Bordeaux - [societe.linneenne.bordeaux@gmail.com]

16 € + 10 € postal cost for = 26€ for Europe and 16 € + 11 € postal cost = 27 € for shipping outside Europe.

Payment by bank transfer.

**Account details:** Bank Crédit Mutuel du Sud-Ouest; Account owner: Ass Ste Linnéenne Bordeaux

IBAN : FR76 1558 9335 6606 1834 8774 020 BIC : CMBRFR2BXXX